

DISCOVER PATTAYA

You are invited to



HIGHGATE INTERNATIONAL SCHOOL THAILAND

CURIOSITY & RIGOUR

Excellence Within
and Beyond the
Classroom

ENGAGEMENT & ENTHUSIASM

An Extraordinary
Facility Ready for
August

COMMUNITY & KINDNESS

Nourishing
Partnerships and
Relationships

JOIN US FOR AUGUST 2026

COMPLIMENTARY COPY



HIGHGATE INTERNATIONAL SCHOOL THAILAND

Drawing upon 460 years of educational expertise, Highgate International School Thailand will offer an academically inclined programme of study for a carefully selected founding cohort when it opens in August 2026. With the development of a purpose-built facility well on track, enrolment into the Pre-Prep and Junior Schools has already begun and interest in the securing of Senior School places is growing, with the launch of Key Stage 3 classes scheduled for 2027.

LEARNING BEYOND BOUNDARIES

Highgate International School Thailand offers a curriculum founded upon the strengths of the Early Years and Foundation Stage Framework and the English National Curriculum, whilst a commitment to challenge, the fostering of independence and adaptation lie at the heart of its approach to teaching and learning.

"We are a school that cares deeply about what is taught and how it is taught, but we also both understand and embrace our responsibility for the holistic development of young people and the harnessing of their intellectual curiosity. We encourage students to engage deeply and to play thoughtfully, collaboratively and with



intention. As a result, Highgate graduates are intellectually, emotionally, culturally and practically equipped to lead a fulfilling life and make a positive contribution to the world around them."

Ben Keeling, Head of School

Pre-Prep and Junior School programmes are thematically arranged, in order to encourage connected thinking, whilst Senior students work to develop the specificity of their thinking and, in the process, begin a journey towards expertise or mastery.



FAST FACTS

Construction Status:

Well advanced and on schedule

Curriculum:

**English National Curriculum
(iGCSE and A-Levels)**

Core Values:

**Curiosity and Rigour
Engagement and Enthusiasm
Community and Kindness**

Environment:

**English-speaking with a judicious,
values-led approach to technology**

FRIENDSHIPS, RELATIONSHIPS AND NETWORKS

A commitment to the development of productive and trusting relationships bound by mutual respect also sits central to the Highgate offer. Parents are observed to be key partners of the school and students identified as key stakeholders in the development of school services.

"Every parent wants to give their child the very best start in life. At Highgate, we believe that this comes with a commitment to the nurturing of imagination, ambition and compassion, and to the stoking of purposeful and stimulating partnerships. This is our school and we will shape it together." — Ben Keeling

As part of an overarching commitment to wellbeing underpinned by a robust set of safeguarding standards, student voice is actively championed and views expressed, whether supportive or more critical, both respected and acted upon.



AN EXCLUSIVE INVITATION FOR DISCOVER PATTAYA READERS

Scan the QR code to book an exclusive private tour at the Visitor Centre, Highgate International School Thailand, discover the school and enjoy a complimentary family photograph.



DISCOVER PATTAYA

CONTRIBUTORS

Infinity Communications

James Kemp

Anthony Justice

Songpone Siriwanlert

Steve Wade

Tim Lee

Barry Upton

Rick Click

Gloria Jones

Carla and Jason Rupp

CONTENTS

COVER STORY

AVENUE BOUTIQUE CONDOMINIUM

DISCOVERING

- 06 TREAT YOURSELF TO A STAY AT
INTERCONTINENTAL PATTAYA RESORT
- 14 ANOTHER MICHELIN MENTION FOR INDIAN BY
NATURE
- 18 CHINESE NEW YEAR - THE YEAR OF THE
FIREHORSE
- 27 PALM CENTER - THIS MONTH'S PATTAYA
PATRIOTS
- 46 ACCOUNTING FOR SUSTAINABILITY

SPORTING AND LEISURE

- 22 THAILAND'S INTERNATIONAL BOAT SHOW
- 24 PIGEON FANCIER WINS BUMPER PRIZE
- 26 SPORTS UPDATE
- 40 WHAT'S ON THE SMALL SCREEN
- 41 WHAT'S ON THE BIG SCREEN
- 42 TECH LIVING
- 44 CONFESSIONS OF A POP TART
- 47 SUDOKU
- 49 SOLUTIONS AND IMPORTANT NUMBERS

PROPERTY AND TRAVEL

- 50 CARLA & JASON GET THEIR KICKS ON ROUTE
66
- 52 KING CHARLES UNVEILS THE NEW F&M
STAIRCASE
- 54 TRAVEL TRENDS
- 58 BUSINESSES FOR SALE



This Month in Discover Pattaya

Happy Chinese New Year, everyone!

The Year of the Fire Horse is an especially fitting symbol for this month's issue, as we eagerly anticipate seeing these magnificent animals in all their glory at Pink Polo on the 28th. Don your finest pink attire for what is always a truly marvellous day out. And if you're curious to discover what the Year of the Fire Horse has in store for 2026, turn to page 18.

February also brings Valentine's Day on the 14th — a perfect moment to pause and reflect on what (and who) we love. If it's a partner you're celebrating, why not indulge in a romantic dinner for two? We wholeheartedly recommend the Michelin-celebrated Indian by Nature. Looking for a thoughtful gift? A rejuvenating facial treatment at Dr Nicha's Clinic comes with an added bonus when you mention Discover Pattaya. Or perhaps the ultimate Valentine's treat: a luxurious stay at the InterContinental Pattaya Resort. Our review on page 6 may be just the temptation you need.

And, of course, there is the enduring love we have for our families — especially our children. What greater gift can we give them than a truly first-class education? We are fortunate to have so many outstanding international schools nearby, with Highgate set to open this August. If you would like to Discover more simply scan the QR code in our Cover Story to book your exclusive tour.

With love from us all at Discover Pattaya x

gloria@pattayatrader.com

Pattayatrader.com Pattaya Trader YouTube

FOR ADVERTISING INFORMATION YOU CAN CONTACT BY LINE



DISCOVER PATTAYA MAGAZINE is produced by Glory Publishing Co Ltd. The contents of the magazine and website does not necessarily reflect the views of the editor or publishers and are solely the views of its contributors and advertisers. The publishers accept no legal responsibility for loss arising from information in this publication and do not endorse any advertising or products available from external sources. All rights reserved.

FUNDRAISING FOR THE QUEEN SIRIKIT CENTRE FOR BREAST CANCER



QUEEN'S CUP PINK POLO



SATURDAY 28 FEBRUARY 2026
12:00 pm - 6 pm at Thai Polo Pattaya



DONATION 1,500 Baht

RSVP : INFO@BGRIMMCOUNTRYCLUB.COM
TEL: 02 651 4081-5



SCAN TO RSVP



Amour à Paris

An Intimate Parisian Evening by the Ocean



14 February 2026 | 6:30 PM onwards

Venue: Poolside, Royal Wing Suites & Spa | Dress code: Smart casual (*no shorts allowed*)

Indulge in a Valentine's evening of refined French gastronomy beneath the stars, as the spirit of Paris unfolds by the sea, accompanied by a soft and romantic ocean breeze.

THB 2,200++ per person per set
(Half-priced portions available for children aged 4 - 12 years old.)

Price is subject to 10% service charge and 7% government VAT

ROYAL CLIFF
ROYAL WING SUITES & SPA
ULTIMATE LUXURY

For more information or to book a table, please contact our Guest Relations at Tel: (+66) 38 250 421 ext. 2037
Email: relax@royalcliff.com | WhatsApp: +66-842 289 596 | Website: www.royalcliff.com



16 February 2026 | 5:30 - 9:00 PM

农历新年自助晚宴 Chinese New Year Buffet

At Panorama Restaurant, Royal Cliff Beach Hotel

THB 999++ per person
(50% discount for children aged 4 - 12 years.)

A Feast of Fortune Chinese New Year Celebration

Celebrate the joy of Chinese New Year with an indulgent buffet dinner. Enjoy an abundant selection of authentic Chinese delicacies and festive favourites, thoughtfully prepared for you to share with family and friends, bringing prosperity, happiness and togetherness to this special celebration.



Price is subject to 10% service charge and 7% government VAT.

For more information or to book a table, please contact our Guest Relations at
Tel: (+66) 38 250 421 ext. 2037 | Email: relax@royalcliff.com or salescn@royalcliff.com (中文服务)
WhatsApp: +66-842 289 596 | Website: www.royalcliff.com

ROYAL CLIFF HOTELS GROUP
THE STATE OF EXCLUSIVITY & FASCINATION

PANORAMA
A taste for every palate



1
INTERCONTINENTAL
PATTAYA RESORT

ELEMENTS
DINING

SYMPHONY OF ELEMENTS

Indulge in seafood on ice, sushi and sashimi, fresh catch ceviche, carved prime rib and whole sea bass, charcoal grilled rock lobster and river prawns, plus French pastries and a live crêpes suzette station.

Every Saturday | 6:00 PM–10:00 PM

ADULT

THB 1,290* NET

PER PERSON (FROM THB 1,950 NET)

CHILD (7-12 YEARS OLD): **THB 645* NET** PER PERSON
(FROM THB 975 NET)

CHILD (UNDER 6 YEARS OLD): **DINE FOR FREE!**

* THE ABOVE PRICES ARE INCLUSIVE OF FOOD ONLY.

IHG  ONE
REWARDS

Get 15% Discount (Only THB 1,115 net)
for **IHG® One Rewards** member!



038 259 888



Treat Yourself and Your Loved Ones to a Stay at InterContinental Pattaya Resort

by Gloria Jones



Perched on a lush headland with sweeping views of the Gulf of Thailand and nearby Koh Larn InterContinental Pattaya Resort is a luxury 5-star beachfront resort like no other. The minute you arrive, you immediately feel transported away from the hustle and bustle of central Pattaya.

I had only recently returned from a rather chilly and busy UK trip so can certainly attest to the value of getting a mini break at this amazing place. No sooner had I stood out onto the balcony of my sumptuous room and heard the birdsong and felt the sea breeze, all the stress of my long haul flight simply melted off me.

I think the Contemporary Thai design staggered throughout the resort is a delight. With charming little buggies to transport you to its various levels the InterContinental blends elegant contemporary comfort with Thai culture.



Some of us enjoy being amongst nature others by a seafront and at this resort you get to enjoy both.

With lush vegetation and a dazzling array of plants and trees the feel of the country is all around and the wonderful light and soothing sea views just add to the instant feeling of calm.

Even if you are already a resident of Pattaya I urge you to try a staycation at this stunning resort. You will feel invigorated and completely renewed after a stay here.



Choose from a range of spacious classic rooms, suites, or even private villas, with balconies overlooking tropical gardens or the sea. Relax on their private sandy beach, or swim in one of the three lagoon-style pools. If you have kids I would recommend “Splash” or if looking for a more chilled vibe go for “Serenity”.

Whichever pool you choose, you can enjoy complimentary bottles of water, luxurious beach towels and pool side service from the attentive staff. There is also a menu available should you choose to snack or enjoy a cooling beverage whilst taking in the sun. Look out for the Happy Hour promotions such as the Buy 1 Get 1 Free options that are great value.





As February is the most romantic of months, you could treat yourself and your loved one. The InterContinental can assist in booking you a Cabana Private Island break. Board a private boat from The Kliffs to spend a whole day on soft white sand or go explore the water with the paddle boards or snorkelling gear provided. An amazing day out full of memories and wonderful photo opportunities. Or you might wish to love yourself with a rejuvenating massage at the Amburaya Spa. Their choice of aromatic oils is wonderful and your skin and in fact your whole body will feel amazing once their expert massage therapists have done their magic. Families will appreciate the Planet Trekkers kids' club. Whilst staying here I noticed a charming idea to make your child's stay more memorable with an "In-room Camping Package" complete with balloons, decorative tent and gifts.





Dining at the InterContinental's acclaimed restaurants is such a treat and I have visited the Blissful Breakfast as a non resident when they have their Buy 1 get 1 free as I feel it offers such incredible value and the joy and varied selection of a Five Star breakfast buffet. This time we also dined at the Infiniti restaurant where the resort is launching a new concept with his Seaside Grill and Bar. We tried the Spaghetti Vongole with delicious olive oil, lime and garlic dressing, a tangy meaty feast of a pizza and plate of fresh, tasty seafood, sea bass with a mango salad. Also for the final indulgence an excellent lemon mousse with fresh fruits and raspberry sorbet.

My final note about this wonderful stay has to be to tell you just how charming and attentive all the staff at the InterContinental are. They really make you feel welcome and cater to your every need. Also with a new Director of Food and Beverage now in residence, there is a lot to look forward to. With special DJ Parties and fabulous events to look forward you really don't want to miss out. Put a date in your diary for the wine dinner by Chef Kitmarrong Chanplaka on the 6th of February and a Vivaldi concert on the 21st March. With its combination of serenity, service, and seaside luxury the InterContinental Pattaya Resort really does deliver a memorable tropical getaway experience. - Go on, treat yourself, you deserve it!



INTERCONTINENTAL®
PATTAYA RESORT

437 Moo 12, Phra Tamnak Road, Nongprue,
Banglamung, Chonburi 20150
Phone: +66 (0) 38-259-888
Email: Reservations.ICPattaya@ihg.com

AVANI

Pattaya Resort

Garden Grill

Settle into a laid-back Saturday night in Avani's tropical garden, where open-flame grills meet easy garden vibes. Feast on freshly grilled seafood, quality meats and classic Thai flavours, plus unlimited soup, salad and dessert. Pick your favourites or share generous platters—perfect for a relaxed, social evening under the stars.

Date: Every Saturday
Time: 6:00 pm – 10:00 pm
Venue: Sala Rim Nam
Price: Start from THB 650++

Avani Pattaya Resort
218/2-3 Moo 10, Beach Road, Pattaya 20260
T: 038 412 120 E: pattaya@avanihotels.com
AVANIHOTELS.COM



PATTAYA
TRADER

To keep updated with the latest from
PATTAYA TRADER



LIKE



COMMENT



SHARE



SUBSCRIBE

To our YouTube and FaceBook Pages

PATTAYA
TRADER

Pattaya Trader - Discover Pattaya Page

PATTAYA
TRADER
GROUP

Pattaya Trader - Discover Pattaya Group

PTEL

Pattaya Trader - Discover Pattaya Expat Ladies Group

EdenKo อีเดนโก้

Outdoor Furniture
by French Design

KAMADO

Hybrid ceramic mixed with quartz cordierite



KAMADO 16 inches

18,990.-

(L*D*H) 35 x 40 x 55cm
2/6P W: 33Kg



24,990.-

**NEW
PRODUCT**

(L*D*H) 121 x 65 x 108cm
6/10P W: 64Kg

**NEW
PRODUCT**



KAMADO 24 inches

34,990.-

**NEW
PRODUCT**

(L*D*H) 135 x 77 x 123cm
/...UP! W: 111Kg

Sofas Set 4-Piece

**SPECIAL
PROMO**

Full Aluminium Frames

Fidji

~~55,990.-~~
39,990.-



Marbella

~~49,990.-~~
39,990.-



Pattaya Chaiyaphruek 2 :
Tel : (Eng/Fr) 085 363 5353
Tel : (Th/Eng) 089 425 4449
Phuket Charlempriak Hafele Center :
Tel : (Th/Eng) 061 930 8800
edenkothailand.com

EdenKo อีเดนโก้
Outdoor Furniture
by French Design

All You Can Eat Seafood Buffet!

Every Saturday / 6-9pm /
THB 1,199++/person
@ The Beach Club Restaurant



International Buffet / Rock Lobster / Blue Crab
Imported Oysters / New Zealand Mussels /
River Prawns / Carving Stations / Japanese
Corner / Thai Herbal Drinks and More...

And enjoy additional free-flow packages:

Soft Drinks for THB 299++
Draught and Soft Drinks for THB 799++
House Wine, Draught, and Soft Drinks for THB 999++

No discount is applicable for free-flow packages.



Cosy Day Bed!

Everyday / 11am onwards
@ The Beach Club

Soak up the sea, sun, and sand - just
order from our menu or rent water-sports
gear for the perfect beach day!

Walk-in: THB 2,000
Reserve for up to 6: THB 4,000



The Beach Club Pattaya | Open every day from 11am until 9pm (10pm on Friday & Saturday)

Pullman Pattaya Hotel G 445/3 Moo.5 Wongamart / Pattaya / Follow us on [f](#) [@](#) [@thebeachclubpattaya](#) ☎ 038 411 940



SUNDAY BRUNCH

GOJI KITCHEN GRILL & BAR

20% OFF
WHEN BOOKING
2 DAYS IN ADVANCE

From THB 1,988++ per person

**EVERY LAST SUNDAY
OF THE MONTH**

12:00 PM - 03:00 PM



For more information and reservation, please contact 033-168 542.

RESERVE A TABLE



406/333 Jomtien Thapraya Rd

Tel: 038 251 250

indian by nature

Recognised Again by Michelin for Culinary Excellence

Lauded as one of the top ten restaurants in Thailand by the Travelers' Choice awards and a member of the prestigious Chaîne des Rôtisseurs, Indian By Nature's Michelin listing for both 2025 and 2026 is perhaps its most significant accolade. The Michelin Guide is the world's most prestigious restaurant and hotel rating system and a global, gold standard for culinary excellence. The very best fine-dining establishments are vetted by anonymous inspectors evaluating quality, technique, consistency, and creativity. A Michelin Star or a "Plate" mention, signals to the world that a restaurant offers exceptional food and is a "must-visit" destination.

MICHELIN

2025 2026



MICHELIN
2026



So how lucky are we here in Pattaya to have one such celebrated restaurant in our midst? While Bangkok has long been a staple of the guide, Indian by Nature or IBN as it is known to almost every resident in our city has been singled out by The Michelin Guide.

Gwendal Poullennec (International Director of the MICHELIN Guide) further noted that Chon Buri's diverse eateries, fresh seafood, and unique local delicacies make it a "lively tourist destination" that the inspection team couldn't wait to explore.

Discover Pattaya has also been a long standing supporter of IBN and loves this pillar of the Pattaya dining scene. A truly beautiful restaurant, custom-built to be a temple of fine dining, traditional Indian techniques and sophisticated, modern flair.

When walking into IBN, you immediately feel the passion that the founders intended. From the private dining room to the elegant décor of the main area every inch of the space suggests that you are about to experience something special. So naturally our team was excited to sample some real treats from the current menu.

Our meal commenced with Beautifully Presented Poppadums. Unlike the standard fare, these were served with an array of vibrant, house-made sauces and small, perfectly crunchy shallots that set a high bar for the textures to come. Next came the Coconut Saffron Prawns. Exceptionally fresh, plump, and juicy prawns in a marinade of lemon grass, garlic and a fragrant coconut saffron sauce



For those who prefer a classic, we can heartily recommend IBN's Onion Bhaji delightfully, crispy, golden, and satisfyingly savory fritters. Although we made sure to leave room for the highlight meals of the evening. The amazing curries that truly showcased the kitchen's range: Lamb Roghan Josh: A masterpiece from Kashmir had lamb that was incredibly tender, swimming in a thick, creamy sauce that provided a "fiery zing" without overpowering the complex layers of spices.

Then the Baked Chutney fish which was a revelation. Using firm fish fillets in a rich onion and tomato gravy. The dish was tempered with mustard seeds and finished with tamarind, resulting in a beautiful balance of tanginess and spice that felt light yet indulgent.

To accompany our curries we chose Aloo Matar Tikki, pan-fried potato cakes filled with a delicate mixture of peas and cilantro, served with sharp mint and sweet tamarind chutneys. Also because no meal at IBN is complete without them, Garlic Naan, which arrived hot, pillowy, and perfect for mopping up every last drop of curry.



Throughout IBN's menu you will find Vegetarian and Non Vegetarian options and also Chefs Recommendations. If, like us, you love to also eat spicy Tikkas you will find a large selection including Prawn, Salmon Chicken and Kebab variations. Although if you find yourself spoilt for choice you can go for a Tandoori Platter (for 2 persons) which has a delightful selection. All genteely served by the lovely team at IBN who will also point you in the right direction when selecting a wine from their very well stocked cellar to accompany your meal!

With over two decades in Pattaya and a mention in the Michelin Guide, this restaurant is operating at the height of its powers. Whether you are a long-time regular or a first-time visitor to Indian by Nature there has never been a better time to experience the charm, flavours and ambience of this local institution.

Indian By Nature 306/64-68, Chateau Dale Plaza Thappraya Road Pattaya
Indian-by-nature.com
 email: gm@indian-by-nature.com
 Phone: 038 364 656
 Mon-Sun 5:00 PM - 11:00 PM



Thai Tapas Tuesday

Thai Tapas Tuesday 499 baht for 2 Perfect for sharing.

Not sure what Thai food you like? Want to eat like the Thai's do?

Now you can choose 5 dishes from our Thai Tapas menu and we'll serve them up with 2 complimentary servings of steamed rice.

Maybe you'll find a new favourite.



499 Baht

NOT SURE WHAT TO TRY?

NOW YOU CAN PICK
5 DIFFERENT DISHES

PERFECT TO SHARE

INCLUDES 2 SERVINGS
OF STEAMED RICE

เลือกอาหารได้ 5 อย่าง

เสิร์ฟพร้อม ข้าวสวย 2 จาน

Spring Rolls Pork

ปอเปี๊ยะหมูทอด

Fried Chicken in Ginger)))

ไก่ผัดขิง

Dried fried Pork Neck

หมูทอดแดดเดียว

Chicken Satay with Peanut Sauce

สะเต๊ะไก่

Stir fried Vegetables

ผัดผักรวม

Spicy Prawn Soup)))) (Tom Yam Soup)

ต้มยำกุ้ง

Deep fried Crispy Pork with Thai Kale)))

คะน้าหมูกรอบ

Green Curry with Chicken or Pork)))

แกงเขียวหวาน ไก่ หรือ หมู

Yellow Curry with Chicken or Pork)

แกงกะหรี่ ไก่ หรือ หมู

Chilli Basil & Garlic with Chicken or Pork or Beef)))

ผัดกระเพรา ไก่ หมู หรือ เนื้อ

Sweet & Sour with Chicken or Pork

ผัดเปรี้ยวหวาน ไก่ หรือ หมู

Panang Curry with Chicken or Pork or Beef)))

พะแนง ไก่ หมู หรือ เนื้อ

*portions are around 25% smaller than our regular menu

www.facebook.com/TheSportsmanPattaya www.sportsmanpub.com

FOODLAND
Supermarket

OPEN 24 HOURS

GOOD FOOD FOR
GOOD HEALTH



PATTAYA-KLANG 0 3836 0171
PATTAYA- TERMINAL 21 0 3325 2000

HEMINGWAYS

JOMTIEN



Monday Quiz Night

All welcome, great prizes & banter. Starts 7.30 pm

Weekend Roasts

Proper British Roasts every Saturday & Sunday.
Beef, Pork, Chicken & Lamb

Live Sport

F1, Premier League, Rugby & more across multiple screens

Order on **Grab** **View Menu**



Get Directions



Book a table: 064-620-9225 hemingwaysjomtien.com

414/21 Moo 12, Jomtien Complex Condotel, Thappraya Rd., Jomtien



2026 YEAR OF THE FIREHORSE

Rooted in ancient Chinese culture, astronomy, and folklore, the Chinese zodiac is a twelve yearly (rather than monthly) cycle. Each year is linked to an animal: Year of the Rat, Ox, Tiger, Rabbit, Dragon, Snake, Horse, Goat, Monkey, Rooster, Dog, and Pig and people believe a person's zodiac sign influences personality, relationships, and fortune. The zodiac appears in Lunar New Year celebrations, astrology, art, and storytelling. The cycle also connects with the five elements: Wood, Fire, Earth, Metal, and Water, adding nuance.

2026 is the Year of the Fire Horse. The sign of the Horse is a symbol of speed, freedom, and restless energy. The Horse symbol also represents movement and independence. It thrives on personal freedom, and the thrill of progress. People born under the Horse sign are often described as charismatic, energetic, and fiercely self-directed. They dislike confinement, whether emotional, professional, or social and are driven by a desire to carve their own path. In a Horse year, these qualities don't just apply to individuals; they influence the collective mood craving change and innovation.

Fire, as an element, symbolizes passion, visibility, courage, and transformation. It brings warmth and light, but can also burn too hot if left unchecked. Also associated with inspiration, leadership, and emotional expression, when paired with the Horse, Fire amplifies ambition and urgency. The result is a year that favors decisive action, dramatic breakthroughs, and fearless self-expression, a year of intensity, bold action, and dramatic transformation.

Historically, Fire Horse years have carried a reputation for disruption and strong personalities. The most famous example is 1966, which coincided with major social and political upheaval in several parts of the world. While history never repeats itself in the same way, the symbolism suggests that 2026 may be marked by rapid change, loud voices, and challenges to existing structures. Old systems that feel stagnant may be questioned, pushed, or outright replaced.

On a personal level, the Year of the Fire Horse encourages people to take risks, pursue long-delayed goals, and assert their independence. It is a powerful year for entrepreneurs, creatives, and leaders who are willing to move fast and trust their instincts. However, the same energy can lead to impulsiveness, burnout, or conflict if enthusiasm turns into recklessness. Balance becomes essential: knowing when to charge ahead and when to pause.

Ultimately, the Year of the Fire Horse is about momentum and courage. It asks individuals and societies alike to confront fear, embrace change, and move forward with conviction. Those who can harness its energy with wisdom and discipline may find 2026 to be a year of extraordinary growth, liberation, and renewed purpose.



February's Pizza

**Pesto Rosso, mozzarella, grilled zucchini,
Parmigiano, basil**



PIZZA of the MONTH

11 AM to 11 PM
306/92-94 Thappraya
Tel: 09 247 514 93



GrabFood



Great to see our Magazines
are being read at
Ocean Marina



AN EXCLUSIVE *Yachting Experience*

BEYOND THE JOURNEY



Exclusive private charters and refined shared voyages,
delivering premium service to the finest island destinations.

ramayana water park



BIGGEST & BEST

Water Park in Thailand

Ramayana
KIDS KINGDOM
**3 NEW KIDS
ZONES!**



Thailand International Boat Show 2026 opens in Phuket, boosting tourism and the marine industry

Supported by the Ministry of Tourism and Sports, Tourism Authority of Thailand, and Phuket Province, the event highlights the growing role of marine tourism in Thailand's high-value travel economy

The Thailand International Boat Show A Luxury Lifestyle Event 2026 at Phuket Yacht Haven Marina, brought together senior government representatives and leaders from the marine and tourism industries to mark the start of one of Southeast Asia's key yachting and waterfront lifestyle events. "Our focus has always been on delivering a high-quality event and a compelling experience for visitors," said David Hayes, CEO of JAND Events, organisers of the Thailand International Boat Show. "There is plenty to discover for families and first-time attendees, as well as serious buyers, and we expect thousands of domestic and international visitors over the four days. The show plays an essential role in supporting Thailand's marine and lifestyle industries and serves as a timely opening to Phuket's high season."

Now in its fourth year, the Thailand International Boat Show is recognised as Thailand's flagship platform for the marine industry and luxury waterfront living. The event followed a successful Thailand Yachting Conference which brought together industry leaders and policymakers to discuss the future of boating and marine tourism in the country. Together, these events highlighted the growing strategic importance of the boating sector to Thailand's tourism and investment landscape.

Visitors were able to explore a curated selection of luxury yachts, marine services, waterfront properties and premium lifestyle brands, alongside marina-side dining, entertainment and social spaces designed for networking and leisure, offering a complete on-water-on-shore experience for both industry professionals and the public. With Thailand continuing to attract high-spending travellers and yacht owners, the show plays a role in strengthening the country's reputation as a regional gateway for marine tourism, while supporting local businesses, marinas and hospitality operators in Phuket and beyond.



PIPR Pigeon Race

by Tim Lee

PATTAYA—If you think pigeon racing is strictly for the birds, tell that to Jassim Al Kulaib. He flew in from Kuwait for the 10th Pattaya International Pigeon Race (PIPR) held on Jan. 10 and returned home \$210,000 richer! That's not bird seed. "I am very happy today," he said. "I've been waiting to win for ten years, competing every year, and now I have the results."

Sponsored by Pattaya One Loft Race, PIPR featured 4,878 racers representing 59 countries competing for the first-place King's Cup with a total of \$62.5K in prize money at stake. After 20 years as a fancier, Kulaib entered 2,000 birds in the race, tremendously cutting down his odds. "Next year, I want to have three thousand," said a smiling Kulaib, who owns a large-scale fishing business.

Most fanciers attending the event placed only a few birds in the race. Werner H. Waldow of Germany, a fancier for over 40 years, has participated in every PIPR since its inception in 2016. This year, he had 13 birds racing. "I've only had one bird come back so far," he said during the race. "That's in the top twenty percent. That's always good. And it looks like another bird will also get in."

Representing the Bangkok Racing Pigeon Club was Chatchawut Patumnakul of Thailand along with his friend, Gerard Koopman of the Netherlands and Koopman Racing Team. Koopman won the Kings Cup in 2024 and 2017. "Today was not so good after he (Koopman) won first prize last year," said Patumnakul. "I don't have a pigeon racing today, but I came to support my friend."

Wind conditions were a factor in the race. The Racing Homers had to fly 600 kilometers to return to the One Loft coop.

"Today we released the birds early in the morning as scheduled," said Dokdai Kamganha, PIPR senior international coordinator. "But there wasn't a strong wind like last year so the times were slower."

Fanciers track their bird's flight through bands attached to their legs. When the pigeon returns to One Loft, it must enter the coop through the open building windows to complete the race. Many homers gather into a flock and circle the loft before entering. This is an anxious moment. "For the fanciers it means everything for their birds to get into the loft as quickly as possible," she said.

From around the world, Fanciers work with One Loft to nurture and train their birds. Buying a pigeon egg costs \$580. One Loft will raise the chick, train it to find its way home, and prepare the one-year-old bird for its annual race. Fanciers then receive the bird for breeding or auction. They then ship the eggs back to One Loft to begin the process again. PIPR culminated a year-long series of pigeon races held worldwide. "Our race continues to grow every year, reflecting increasing international interest and participation," said Kamganha.

Clearly, pigeon racing is not only for the birds!



Winning Wings—One Loft handler shows off the first-place racing homer owned by Jassim Al Kulaib of Kuwait.



Award-winning fanciers and their racing homers celebrate the 10th Annual PIPR with One Loft staff and crew.



Sports Update

For February by Steve Wade

There are some big events this month in the sporting world so although there's a full programme of Premier League action we'll let Arsenal wend their merry way to the title and concentrate on some of the other sports that will be taking the spotlight in February. Before we do that, and we won't mention football again, the Champions League knockout phase starts this month with matches being played on the 17th and 18th and again the following week.

The Superbowl final takes place on the 8th of the month in California and the current favourites to contest the final are the Seattle Seahawks and the Los Angeles Rams but the New England Patriots, Buffalo Bills, Denver Broncos and Houston Texans are still in with a shout and the final line up is not quite settled yet. The half time show is being done by Bad Bunny, a Latin American artist I believe, who racked up more streams on Spotify than any other artist on the planet last year. Donald Trump is not a fan by all accounts.

The ICC Men's T20 Cricket World Cup starts on the 7th and features 20 teams playing 55 matches over the following four weeks. India and Pakistan are hosting the event with the former the current favourites for the competition at around 3/1. England are third favourites behind the aforementioned India and Australia and the English supporters can only hope that they put up a better show than they did in the recent Ashes series. If the 5 day test version of the great game doesn't suit their style of play perhaps trying to knock everything out of the park for twenty overs will suit them better. This may not appeal to the purists but it's always great fun to watch, especially amongst the cricket mad fans in that part of the world.

Next up we have the Six Nations Rugby, which starts on Thursday the 5th with a cracking fixture, namely France v Ireland at the Stade de France. That's followed by two more matches on the 7th and two more sets of fixtures later in the month. France are the current holders and the betting suggests that they are the strong favourites to retain the title but England are breathing down their necks and strangely enough the fixture between the two is scheduled to be the last game of the tournament in mid March. These matches are always a great watch and mean an awful lot to Rugby Union fans in the UK and Europe. It has a great tradition, with the original Four Nations first playing as far back as 1883 and it continues to be a highlight of the sporting calendar.

Last but by no means least, the Winter Olympics is taking place this month with the 116 events happening in various locations in Northern Italy. Those 116 chances to win an Olympic medal are spread over 16 different disciplines and although I am by no means a follower of these sports, I do find some of them, the downhill skiing and ski jumping for example, an exciting watch. You've also got the Bobsleigh events, which are always entertaining and of course the Luge, where basically some lunatics go down the side of a mountain at 70 mph on a tea tray! For anyone who likes winter sports, it's going to be an entertaining few weeks.



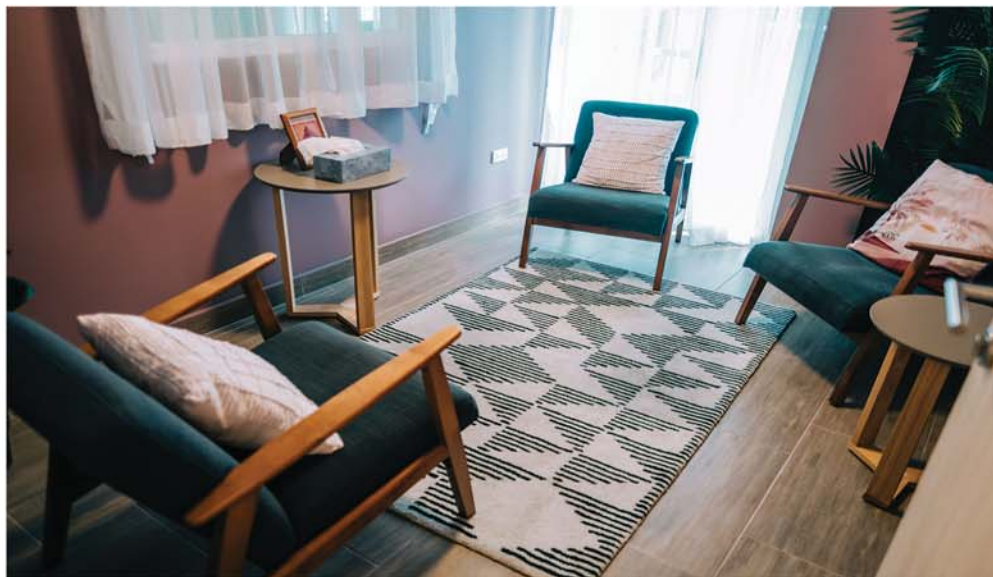


I am using the term Patriot for a series of articles to feature in the magazine. Firstly because I love the alliteration, and secondly because I wanted a word to describe some very special people who live amongst us here in Pattaya. Sometimes given a military connotation, the word patriot actually describes someone who deeply loves, supports and defends their country (or, for the purposes of this article, their city). They often demonstrate loyalty through service, sacrifice, and civic engagement. True patriotism goes beyond mere pride—it involves striving to make improvements for all, for freedom, and for progress. If you missed any of the earlier Pattaya Patriots articles you can still find them online at our website pattayatradetrader.com.

The Palm Center opened 1st January 2025 on Pattaya's 3rd road as a safe, supportive space in the centre of the city. With qualified counselors on hand to talk about stress, anxiety, sadness, or challenges, the Palm Center offers support, healing, and guidance. The team here work with individuals, couples and families and have also expanded their services to include outreach initiatives aimed at providing care and support to vulnerable groups.

Over the last few years mental health has been given a lot more attention and mental health counseling is important because it helps people understand and manage their thoughts, emotions, and behaviors in a healthy way. Counseling can teach coping skills, problem-solving strategies, and ways to build confidence and resilience. It also helps prevent small problems from becoming overwhelming or long-term. The counseling offered at the Palm center is free of charge and offered without judgement. Their mission is "to empower individuals and communities to achieve healing and wholeness."

I went to visit the Palm Center and was immediately struck by how informal and welcoming their space is. Rather than a cold, hospital-like environment the centre has rooms that are cozy and warm looking and the modern therapies available include "Eye Movement Desensitization and Reprocessing" (EMDR) in both Thai and English languages. The qualified counselors meet and talk with people to help them find hope and connection so I asked who these people might be? As you would expect all counseling is given privately and in confidence so no names were divulged. However I was told that it can be for individuals, couples or groups and often for women who come from the nearby bars because they are depressed or even feeling suicidal.





For example, women can lose their jobs at restaurants and bars simply because they are deemed "too old". They often have to compete with much younger women who are recruited through TikTok reels that promise them easy money. If they do not meet their quotas, they are fired from their jobs, without anyone to turn to for advice or support.

The team at the centre also works in conjunction with the social welfare department in Chon Buri often going out to some of the poorest areas of Pattaya. Counselors from the Palm Center also offer programmes for schools to help teachers, parents and pupils address important issues such as bullying. This has become an increasingly common problem very prevalent especially in the form of social media bullying.

Also individuals may be referred to the centre for private counseling often because they are unable to cope or are suffering after a trauma. By improving emotional well-being, mental health counseling supports better relationships, school or work performance, and overall quality of life.



Marriage and relationship counseling is also something that the center carries out. I believe this is an excellent service and firmly believe that taking care of mental health is just as important as caring for physical health. So if you would like to know more about them or want to help or donate you can contact The Palm Center by

email : info@palmcenterthailand.com
 Line: @palmcenterthailand
 Or their website: palmcenterthailand.com





A
AMA FASHION
Bespoke Tailor



VISIT OUR BEAUTIFUL STORE ON PATTAYA KLANG

+ (66) 38 361 861, 081 517 7321

chris-thailand@hotmail.com

www.ama-fashion.com





EARLY EDUCATION: A HEAD START



HIGHGATE
INTERNATIONAL SCHOOL
THAILAND

As the Pre-Prep building at Highgate International School Thailand reaches completion, we were keen to look a little more closely into the preparation that has been taken for the accommodation and engagement of the youngest learners.

Just a few moments with founding Head of School, Ben Keeling, will tell you of his passion for education and determination for the enhancement of early learning at Highgate. He speaks compellingly about the physicality of the Pre-Prep School and the care that has been given to the arrangement of learning spaces, noting that the quality of our very first school experiences is closely linked to happiness and future success.

Featuring its own music, performance and aquatics facilities, as well as a myriad of communal a play spaces, it is clear that the school campus is going to support an extraordinary range of activity, but it is the teaching team, he says, that will make the most significant difference.

“Highgate teachers are a unique breed. Offering an astonishing depth of knowledge and a palpable commitment to the development of their craft, they are also enormous fun. They revel in the responsibilities they hold and bounce into work each morning.”

Ben Keeling, Head of School

The curriculum for Pre-Nursery, Nursery and Reception is grounded in the Early Years Foundation Stage framework and delivered through purposeful high-quality play. Application for enrolment in the Pre-Prep and Junior Schools is already open. Parents keen to learn more about the unique advantages of a Highgate education are encouraged to contact the administrative team via admissions@highgateschoolthailand.com.



YOUR PATH, YOUR TAILORED JOURNEY TO SUCCESS: THE IBDP AND A LEVELS

at Regents International School Pattaya



For Sixth Form students, choosing the right academic pathway is an important step toward university and future success. Regents International School Pattaya understand that no two students are alike. Every learner has their own strengths, ambitions, and preferred learning style. This is why Regents proudly offers **both** the **International Baccalaureate Diploma Programme (IBDP)** and **A Levels** - a unique advantage that empowers students to choose the path that aligns with their future aspirations.

A LEVELS: SPECIALISED AND FOCUSED

A Levels are a UK-based programme known for academic depth. Students study three subjects intensively, making this pathway ideal for those who already know their intended university course.

Why choose A Levels?

- Strong acceptance at leading universities.
- Deep subject expertise.
- Clear preparation for specialised university study.



IBDP: BROAD, BALANCED, AND GLOBALLY RESPECTED

The IBDP challenges students through six subjects plus three core components - CAS (Creativity, Activity, Service), TOK (Theory of Knowledge), and the Extended Essay - creating a holistic learning experience that develops both academic and personal strengths invaluable for today's fast-paced world.

Why choose the IBDP?

- Highly valued by and strong acceptance at universities around the world.
- Builds critical thinking, research, and a broad range of academic and organisational skills.
- Encourages personal growth, leadership, and global awareness.

A TRULY TAILORED SIXTH FORM EXPERIENCE

What truly sets Regents apart is the school's commitment to future readiness. All IBDP and A Level students follow a specialised 'Future Ready' course, designed to strengthen the skills modern universities and employers value most:

communication | collaboration | critical and creative thinking | global citizenship

This programme ensures that even students who choose a specialised pathway still benefit from holistic development.

Whichever pathway a student selects—the IBDP or A Levels—they receive the guidance, structure, and challenge needed to thrive at university and beyond.



For more information about the Sixth Form offer at Regents International School Pattaya, please contact admissions at admissions@regents-pattaya.co.th

JOIN OUR **OPEN** DAY



SECONDARY AND BOARDING OPEN EVENING

THURSDAY 19TH MARCH
4:30pm - 6:30pm

PLEASE ARRIVE AT 4.00PM TO ALLOW
THE EVENT TO START AT 4.30PM.



EARLY PRIMARY AND PRIMARY OPEN MORNING

FRIDAY 20TH MARCH
9:00am - 10:30am



Register here



We encourage you to bring your children to the event.



Joyful Journeys, Bright Futures: Where Early Learning Begins at MIS

By James Kemp - Head of Teaching and Learning at Mooltripakdee International School

When families choose a school for their youngest children, they are not simply choosing a place of learning; they are choosing a second home. At MIS, we believe that joyful journeys in the early years lay the foundations for bright futures ahead. As Deputy Head of the school, and following a recent conversation with our Head of Early Years, Ms. Mercedes, I was reminded just how intentionally and thoughtfully these first steps in education are designed at MIS.



One of the defining features of our Early Years provision is our exceptional outdoor learning environment. At a time when many young children spend increasing amounts of time indoors, we have made a conscious decision to prioritise outdoor exploration.

Our Early Years outdoor spaces allow children to explore freely within a safe, carefully planned environment. Here, children climb, balance, build, dig, run and imagine, developing physical confidence, social skills and independence through meaningful play.

With spaces designed to encourage movement, curiosity and imaginative play, it offers children the opportunity to take age-appropriate risks and build resilience in a supportive setting. Alongside this, MIS Minis, our twice-weekly, activity-led playgroup for younger children, offers families an inviting introduction to school life. Through structured play, songs, stories and hands-on activities, MIS Minis provides a nurturing first step into learning, helping children build confidence while allowing parents to connect with our Early Years team and wider school community.

A key enhancement to our curriculum is Adventure Time, an opportunity for children to take ownership of their learning. During Adventure Time, children can create their own learning-related adventures that reflect their interests, or they may be guided by their teacher to explore particular skills, concepts or areas of the environment. This balance between child-led exploration and thoughtful adult support ensures that learning remains purposeful while still feeling exciting and engaging. Adventure Time works hand in hand with the development of our continuous provision, particularly in our outdoor areas. Carefully resourced learning zones remain available over time, allowing children to revisit ideas, practise skills and deepen understanding. Whether children are engaged in role play, construction, early writing, problem-solving or collaborative activities, they are encouraged to think, communicate and explore at their own pace. Our teachers observe closely, stepping in at just the right moment to extend learning or introduce new challenges.

Under the leadership of Ms. Mercedes, our Early Years team places the child firmly at the centre of everything they do. Academic foundations are built alongside confidence, emotional wellbeing and a genuine love of learning. Children are encouraged to be curious, to ask questions, to persevere and to celebrate their achievements, qualities that underpin bright futures well beyond the Early Years.

For expatriate families in Pattaya, choosing the right school is an important decision. At MIS, our Early Years provision offers a warm, stimulating and inspiring environment where joyful journeys lead naturally to bright futures.



MIS Minis is open to children from 8 to 24 months, on Mondays 8 - 10am and Thursdays 3 - 4:30pm.

Please contact minisplaygroup@mis.ac.th for more information.



MOOLTRIPAKDEE INTERNATIONAL SCHOOL

Call 092-3261188 or e-mail enquire@mis.ac.th
to book a school tour.



Discover a Campus of Excellence & Sustainability

Book a personal tour with our Head of School and discover our unique approach to hands-on learning!



Why our Parents Choose Green Valley

Top
Academic Results
in Thailand


Leading
Eco-School
Initiatives for a
Sustainable Future

The only
PYP
School on the
Eastern
Seaboard


Student centred approach
to learning

Learning
beyond the classroom



Our students attend
Top Universities Worldwide

 University of
BRISTOL

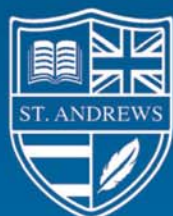
**Imperial College
London**

 **KING'S
College
LONDON**

 香港中文大學
The Chinese University of Hong Kong

**Les
Roches**





St. Andrews
International School
Green Valley

DISCOVER PATTAYA

Be adventurous. Be brilliant. Be happy.

**Book a
tour today!**





INTERNATIONAL SCHOOL
EASTERN SEABOARD

APPLY NOW



**SCHOLARSHIPS
UP TO 100%**

FOR IB DIPLOMA STUDENTS

AND FOR STUDENTS FROM **GRADE 8 - 12**

**50% DISCOUNT
ON TUITION FEES
FOR PRE-K 2**

- ✓ WASC ACCREDITED
- ✓ AMERICAN CURRICULUM AND AMAZING LANGUAGE PROGRAM
- ✓ OVER 400 ALUMNI IN TOP UNIVERSITIES ABROAD
- ✓ LOCATED INSIDE BURAPHA GOLF COURSE
- ✓ IB DIPLOMA PROGRAMME SINCE 2004



PHONE: 087-9171010 | WEBSITE: www.ise.ac.th | EMAIL: admissions@ise.ac.th

Long-Term Property Rights in Thailand: Why Sap Ing Sith Matters

If you're thinking of a long-term property investment in Thailand but are concerned of the country's strict foreign land ownership rules, understanding Sap Ing Sith could be a game changer. This relatively new legal system provides foreigners with a structured means of obtaining significant, lasting rights over land or property in Thailand.

What Is Sap Ing Sith?

Sap Ing Sith, literally "right-based property," is a registrable real property right created under Thai law in 2019. It lets the holder use, control, and benefit from land or buildings almost as if they own them — but with key distinctions from full ownership.

It's important to recognize that Sap Ing Sith is not traditional ownership. Instead, it grants a 30-year use right that must be registered at the Land Office to become legally enforceable against third parties.

Why It Matters for Foreign Buyers

Under Thailand's Land Code, foreigners **cannot own land outright**, except in very limited situations. Sap Ing Sith fills a gap by giving non-owners substantial rights that go well beyond an ordinary lease. Here's why investors and long-term residents should pay attention:

1. Long-Term Security Without Ownership

Unlike informal leases, Sap Ing Sith becomes a registered real right once the paperwork is complete. This means you're not just relying on a contract between two parties — the state recognizes your interest in the property for up to 30 years. However, be aware that the law does not guarantee automatic renewal after 30 years, and any promise of a "30 + 30" arrangement is not a statutory right — at best, it's a private agreement that may not be enforceable.

2. Transferable and Mortgageable

Sap Ing Sith rights can be transferred to others or even used as collateral for loans — advantages that traditional leases don't typically offer. This flexibility enhances liquidity and value for investors.

3. Inheritance Planning

Unlike many lease arrangements, a Sap Ing Sith can be inherited under Thai law, giving your heirs continued use rights — a significant planning benefit for those considering legacy investment or retirement plans.

Sap Ing Sith vs. Other Land Use Options

For context, Thailand has several mechanisms for non-owners to secure rights over property:

- Leasehold agreements, up to 30 years (plus renewals at the owner's discretion), but historically they lack the real right status that Sap Ing Sith offers.
- Usufruct — gives use rights, but typically less transferable and with fewer commercial advantages.
- Sap Ing Sith — sits uniquely as a real property right that is registrable, inheritable, transferable, and can function as security.

From a consultant's vantage point, Sap Ing Sith is often the strongest alternative to ownership available to foreign investors — but it also comes with complexities that require careful navigation.

Key Considerations Before You Proceed

1. Due Diligence Is Essential

Make sure the property is free of encumbrances and has a current Chanote (title deed) before making an investment. Costly pitfalls can be avoided with proper legal and land office checks.

2. Quality of Agreement Matters

The underlying Sap Ing Sith agreement between you and the Thai landowner must be comprehensive and clear. Long-term interests are safeguarded by carefully crafted terms on use, transfer, improvements, termination, and dispute resolution.

3. Legal Assistance Is Highly Advisable

Working with a qualified Thai property lawyer or consultant will greatly reduce risk and administrative burden. It is not easy to navigate registration at the Land Office and ensure enforceability against third parties.

Final Thoughts

If there's one thing I always tell foreign clients, it's this: buying property in Thailand is less about what you want and more about how the law lets you get there. Sap Ing Sith is a carefully crafted legal tool that, when used correctly, can provide you with genuine peace of mind. It is neither a shortcut nor a loophole. Nevertheless, when expectations are clear, Sap Ing Sith performs at its best. It shouldn't be promoted as land ownership under a different name. Its true worth is found in the flexibility it offers over traditional leasehold arrangements, the ability to plan ahead, and the legal certainty it offers. With the right advice and a long-term mindset, Sap Ing Sith can be a smart, balanced way for foreign buyers to build a secure future in Thailand.



MAGNA CARTA LAW FIRM

- LEGAL SERVICES
- ACCOUNTING SERVICES
- LOAN ASSISTANCE
- COMPANY FORMATION
- DUE DILIGENCE
- VISA & WORK PERMIT
- NOTARY SERVICES

www.magnacarta.co.th



MagnaCartaLawFirmPattaya



magnacartalawfirm



Magna Carta Law Firm

Turning Complex Legal Issues into Clear Solutions

With a team of experienced and passionate legal professionals, we offer a comprehensive range of services tailored to meet your individual needs.



LEGAL

- ☑ LITIGATION
- ☑ BAIL BOND
- ☑ DIVORCE | CHILD CUSTODY
- ☑ WILLS AND PROBATE
- ☑ NOTARY
- ☑ LEGAL CONTRACTS



BUSINESS

- ☑ THAI COMPANY FORMATION
- ☑ US TREATY OF AMITY COMPANY REGISTRATION
- ☑ BOI COMPANY REGISTRATION
- ☑ BUSINESS LICENSES
- ☑ BUSINESS DUE DILIGENCE



ACCOUNTING

- ☑ MONTHLY ACCOUNTING
- ☑ BALANCE SHEET
- ☑ TAX PLANNING
- ☑ ACCOUNTING SYSTEM



REAL ESTATE

- ☑ TRANSFER OF PROPERTY
- ☑ PROPERTY DUE DILIGENCE
- ☑ BUILDING PERMIT



VISA AND WORK PERMIT

- ☑ BUSINESS VISA
- ☑ RETIREMENT VISA
- ☑ MARRIAGE VISA
- ☑ DEPENDENT VISA
- ☑ WORK PERMIT



SECURED LOAN

- ☑ WE ACCEPT LAND, HOUSE OR CONDO
- ☑ FAST APPROVAL WITHIN 7 DAYS
- ☑ COMPETITIVE INTEREST RATE
- ☑ 1M THB MINIMUM LOAN AMOUNT

CONTACT US NOW!

☎ +66 38 37 37 35

LINE @magnacartlawfirm

✉ legal@magnacarta.co.th

🌐 www.magnacarta.co.th



WE'VE GOT YOU COVERED

**LOCAL CREMATIONS COVERING PATTAYA
AND ALL REGIONS OF THAILAND**

International Repatriation Services

Worldwide Funeral Services

Pre-planning Funerals Services

Email - Jeff.Mitchell@amarepatriations.com

Dao@amarepatriations.com

Web: <https://www.amarinternational.com>

Bio House Tower, 3rd Floor, 55 Sukhumvit Soi 39,

Klongtan Nua, Wattana, Bangkok 10110

Tel: +66 2 258 5946, Mob: +66 98 564 2961, +66 92 859 5616



**“ I USED TO HAVE KNEE PAIN
and a catching sensation every time I walked**

due to boxing training and exercise. But after receiving PRP treatment at Taara Clinic, the knee pain and catching sensation have significantly improved. I'm now able to return to exercising normally. ”

Khun Yodsaenklai, a professional Muay Thai fighter.

TAARA MEDICAL CLINIC www.taara.clinic

033-003112 ,
063- 917 3777



ASIAN OPTICAL

When did you last have your eyes tested?

Like regular trips to the dentist having your eye tested is something we often forget to do and yet we should get them checked at least once a year.

There are many opticians in Pattaya and quite often on our Facebook sites Pattaya Trader - Discover Pattaya and Pattaya Trader Expat Ladies Group we are asked to give recommendations. Asian Optical on Pratumnak Soi 4 is the only one we recommend. This is because unlike some other opticians that are little more than shops selling glasses in Pattaya Asian Optical can give you a proper eye test and they also have a fantastic selection of frames, lenses and contact lenses.



Contact Khun Charn for an appointment
091 7499965 and remember that if you wear
contact lenses you need to take them out at least 3
hours before you are due to take your test.
FB Asian Optical email V_impress@hotmail.com
Soi 4, Pratumnak, Pattaya, Chon Buri
Telephone 081 001 0418, 0822151709
ID Line Kamol Meng



NICHA CLINIC- Profhilo Skin Booster

Love Yourself or Gift to Another This Fantastic Profhilo Offer from Dr. Nicha

Unlike traditional dermal fillers, Profhilo Skin Booster is an injectable skin treatment from Switzerland that can improve skin quality without altering facial structure. Profhilo does this by stimulating the skin's natural production of collagen and elastin. For as we all know these decline with age, leading to sagging, lines, and dullness but Profhilo treatment can counteract these changes and restore healthier-looking skin.

Profhilo uses a unique form of high-hydration hyaluronic acid which is thermally stabilized, to allow it to flow smoothly beneath the skin. This gives Profhilo its distinctive spreading ability so once injected by a skilled practitioner, it distributes evenly across the treatment area, creating a widespread hydrating and rejuvenating effect. Also as the injections are shallow the procedure is fast, relatively



Profhilo Skin Booster

- Intense hydration from within.
- Natural flow & smoothness
- Improve skin laxity on face, neck, hand.
- Stimulate collagen and improve skin elasticity

Profhilo is especially good when used to treat the face, improving fine lines, texture, and radiance. Or the Neck, where sometimes crepiness can occur and needs treatment. Some love to use it on their hands to restore hydration and reduce thinning skin or even on the décolletage, for smoothing and increased brightness. Wherever the treatment occurs the main reason people choose Profhilo is its ability to produce natural-looking results. The treatment does not add volume or change facial contours, so the outcome is subtle but noticeable. The skin appears smoother, firmer, and more hydrated, with a healthy glow often described as "dewy" or "refreshed." Improvements typically become visible within a few weeks, with optimal results after the second session. Maintenance treatments are recommended every 6 to 9 months, depending on age, skin condition, and lifestyle.



While side effects are minimal, this is still a medical treatment. Therefore it is important to always seek a trained professional who can give a proper consultation to ensure the product is suitable for individual skin needs. So if you are considering Profhilo, book an appointment with Dr. Nicha to see if she would recommend this innovative skin revitalization for you, and to tempt you further mention Discover Pattaya to enjoy this very special February promotional offer when booking.



Valentine's Special
PROFHILO 20,000.-
FREE RF FACE LIFTING
When you mention this article

Nicha Clinic | nichabeautyandbeyond@gmail.com | +66 084 292 4795

084-292-4795

Nicha Clinic Pattaya
202/105-106 Moo 9, Nongprue
Banglamung, Chonburi 20150



What's on The Small Screen



Bridgerton (Season 4, Part 2)

Luke Thompson, Yerin Ha, Katie Leung

In the dramatic conclusion of the season, Benedict Bridgerton finally discovers that his mysterious "Lady in Silver" is actually Sophie Baek, forcing him to confront the rigid class barriers of the Ton.



Cross (Season 2)

Aldis Hodge, Isaiah Mustafa, Juanita Jennings

Alex Cross tracks a ruthless vigilante who is systematically hunting down and murdering corrupt billionaire magnates.



The Last Thing He Told Me (Season 2)

Jennifer Garner, Angourie Rice, David Morse

Hannah and Bailey's fragile peace is shattered when Owen suddenly resurfaces from hiding.



The Burbs

Jack Whitehall, Keke Palmer, Julia Duffy

A young couple team up with eccentric neighbors to uncover some deadly secrets within their seemingly peaceful suburban cul-de-sac.



The Muppet Show Reunion

Matt Vogel, Eric Jacobson, Dave Goelz

To celebrate their 50th anniversary, Kermit the Frog and the classic Muppet gang return to their original theater to produce a brand-new variety show.

What's on The Big Screen



Hamnet

Jessie Buckley, Paul Mescal, Zac Wishart

Set in 16th-century England, the film explores the marriage of Agnes Hathaway and William Shakespeare as they grapple with the devastating death of their 11-year-old son. This profound personal tragedy serves as the emotional catalyst for the playwright's eventual masterpiece, Hamlet.



Shelter

Jason Stratham, Naomi Ackie, Bill Nighy

A man living in self-imposed exile on a remote coastal island is forced back into a world of violence after rescuing a young girl from a deadly storm.



Crime 101

Chris Hemsworth, Mark Ruffalo, Halle Berry

A master jewel thief teams up with a disillusioned insurance broker for one last heist while a relentless detective closes in on them.



Sentimental Value

Elle Fanning, Stellan Skarsgard, Renate Reinsve

An estranged filmmaker attempts to reconcile with his actress daughter by casting her in a movie about their family history



Song Sung Blue

Hugh Jackman, Kate Hudson

Two struggling musicians find love and local fame in Milwaukee by forming a joyous Neil Diamond tribute band

Tech Gifts

for your loved ones

This Valentine's Day



Samsung Galaxy Z Flip 7

The Samsung Galaxy Z Flip 7 is a perfect blend of high fashion and high tech, making it a standout Valentine's Day gift. This year's model features a significantly larger 4.1-inch edge-to-edge FlexWindow, allowing your partner to reply to texts or use Galaxy AI without even opening the phone. When unfolded, the expansive 6.9-inch display and upgraded 4,300mAh battery ensure they can stream and chat all day. With its chic, pocketable design and a 50MP camera built for effortless hands-free date night selfies, it's more than a phone—it's a stylish accessory that shows you're ahead of the curve.

Oura Ring 4 (Gen 4)

The Oura Ring 4 is a beautifully discreet way to show your partner you care about their well-being, blending the elegance of high-end jewelry with industry-leading health tech. This latest generation features a sleek, all-titanium design with fully recessed sensors, offering a smoother, more comfortable fit for 24/7 wear. Powered by new Smart Sensing technology, it delivers highly accurate data on sleep quality, heart rate, and stress levels, while the upgraded battery now lasts up to eight days on a single charge. Whether they choose a classic metallic finish or a soft hue from the new Ceramic Collection like Petal pink, it's a deeply personal Valentine's gift that helps them feel their best every day.

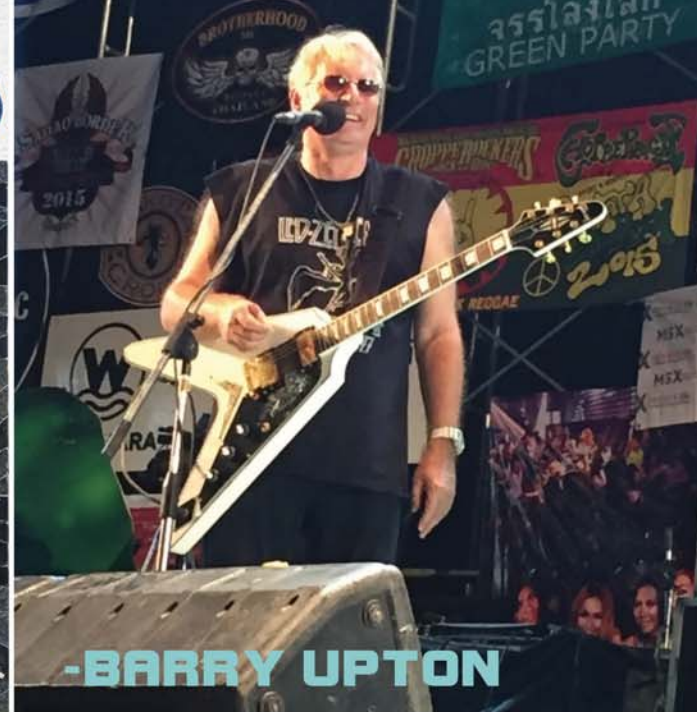
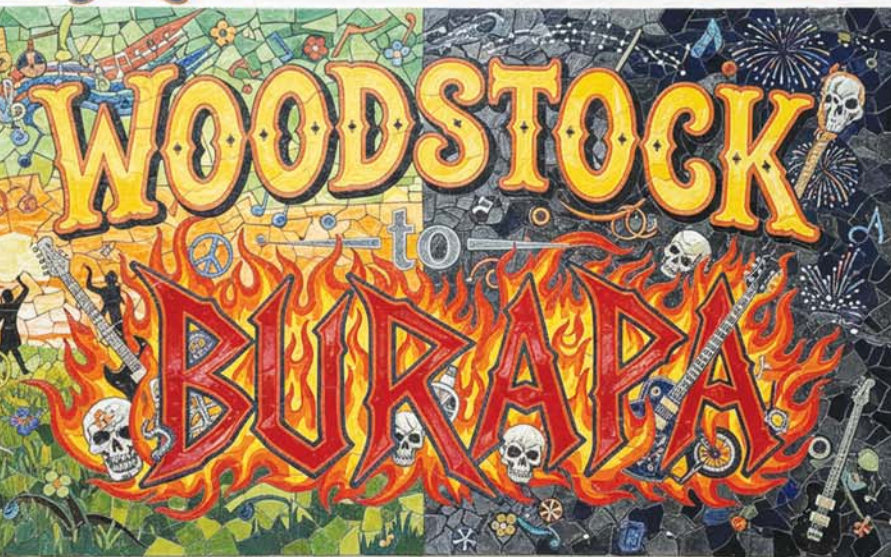


Apple Watch Ultra 4

For the adventurer who has everything, the Apple Watch Ultra 4 is the ultimate Valentine's gift that says you want them to stay safe and connected on every journey. This latest iteration boasts a refined hybrid titanium design that is both lighter and more durable, paired with a massive 49mm display that reaches a record-breaking 3,500 nits of brightness for crystal-clear visibility in any conditions. The new S11 chip brings lightning-fast on-device AI for smarter recovery insights, while the expanded 4,500mAh battery provides up to 48 hours of normal use—or nearly four days in Low Power Mode. With its iconic rugged aesthetic and precision dual-frequency GPS, it's a powerful tool for hiking, diving, or just staying on top of their fitness goals, wrapped in a design that looks just as good at a romantic dinner as it does on a mountain trail.



MUSIC FESTIVALS..



If music festivals were people, Woodstock would be your 75 year old friend who still owns a tie-dye shirt and insists everything was better in 1969, while Glastonbury would be your eccentric British nephew who shows up wearing wellies and a cape, rain or shine.

Woodstock was the festival that accidentally invented modern music festivals by completely losing control of itself. Woodstock was supposed to be a “nice little gathering” of about 50,000 people. Instead, half a million ‘hippies’ showed up, politely ignoring fences, traffic laws, and common sense. The organisers panicked, declared it a “free concert,” and history was born. Imagine throwing a garden party and discovering the entire state of New York has arrived with sleeping bags and guitars. There was no Wi-Fi. No apps. No schedule you could check. If you wanted to find your friends, you simply shouted their names into the crowd and hoped destiny was listening. People swam naked in muddy ponds, invented new forms of dancing, and consumed substances that probably still haven’t worn off. The toilets were... theoretical.

And yet, somehow, through rain, mud, food shortages, and a complete breakdown of civilisation, legends like Jimi Hendrix, Janis Joplin, Santana and The Who created one of the most iconic musical moments in history. Woodstock proved that if you mix peace, love, and loud guitars, humanity might survive anything.



In Pattaya, during the middle of February, Burapa Bike Week has an annual music free festival that takes it’s cue from Woodstock, promoting peace & love amongst all biker groups and festival goers. Once a year, this normally sun-soaked party town transforms into a roaring, leather-clad, tattoo-powered kingdom of chrome. The Indoor Stadium park area fills with motorcycles so shiny they can double as mirrors, and engines so loud they reset nearby car alarms purely out of intimidation. Burapa Bike Week is not just a festival. It is a full-body experience.

From the moment the first Harley rolls in, Pattaya knows what’s coming. The ground vibrates. The air smells like petrol, barbecue, and ambition. Bikers arrive from all over Thailand and beyond, riding machines that look like they were designed by a mad scientist with a welding torch and too much free time. Every rider looks cool, especially the ones with a rock chick on his saddle, women who look like they just rode in from a rock album cover. The music never stops. Rock bands scream into the night while the crowd drinks Chang beer like it’s sponsored by hydration itself. Someone is always revving an engine for no reason at all. Nobody complains. This is a festival — noise is the point. Food stalls line the arena selling everything from grilled squid to essential burgers. And somehow, through the noise, the heat, the music, and the madness, there is a strange sense of brotherhood. Everyone is smiling. Everyone is welcome. Everyone belongs. Burapa Bike Week is not just a festival. It’s a thunderstorm made of motorcycles and music.





On-Line: RotaryPattaya.com/RotaryRadio

Rotary Radio is now operational around Pattaya on 90.75FM and online at rotarypattaya.com/rotaryradio.

The station and playlist is supervised by radio production manager Barry Upton who has come up with an original concept which will not only entertain, but inform about Rotary clubs from all over the Pattaya region and, hopefully, beyond.

The thought is that by having a one stop centre where people can learn about Rotary and it's many fund raising events, the city and individual Rotary clubs can benefit from 24 hour, 7 days a week radio exposure.

Barry's concept for the music is a contrast to Pattaya People Radio (now on 88.25FM), which is mainly fun, commercial, singalong, upbeat, pop/rock/oldies.

Rotary Radio will feature a much more 'easy listening'/'soft rock' vibe with artists such as Steely Dan, America, Fleetwood Mac, The Eagles, Chicago, James Taylor, Joni Mitchell, The Carpenters, Bread, Carole King, Cat Stevens, Enya, Jazz, Soul and Country classics with additional love song ballads from the Beatles and The Beach Boys.

The station logo ident is – Rotary Radio ... Cool Music For Cool People. In between the wonderful relaxing music will be voice idents from Rotary members, useful information about Rotary in general plus details of upcoming events.

At the top of each hour is a worldwide news summary from FSN. Pattaya Rotarian & past president Jan Lund has commented:

"Congrats on the new radio station. It is actually 'cool'. I had the pleasure to listen to 90.75 while I was driving around in Pattaya and then listened to Rotary Radio all the way on my drive from Hua Hin to Phuket via the Internet. During my eight hour trip, the audio was technically perfect via my mobile and a portable speaker in the car. It was a great experience. I really like the concept. Those short statements in between from the members are pure gold. Informative, human, authentic, but not too serious and often with a humorous finish.

Barry's total professionalism running the station is damn cool. The music, well I never felt like it was too much or boring. This is actually something that you can listen to hours after hours. Some well known hits and some surprises. There were tunes unknown to me but the style was evident all the way through. I liked it and felt comfortable in the company of Rotary Radio. So well done. a new child is born. I can see a great future for it out there."

The Rotary Club of Pattaya is extending a hand of friendship to all other Rotary clubs in the area and it's very much hoped that they will respond by contributing to the radio output with events, personal voice idents about themselves and any relevant issues which can educate a wider public to the benefits of Rotary and the good deeds the organization provides. This is indeed, a project for our local community and beyond.

90.75FM & online at RotaryPattaya.com/RotaryRadio



ACCOUNTING FOR SUSTAINABILITY

CHAPTER 4 BUSINESS GROWTH ANATOMY

by Siriyothin Accounting & Law Firm

In the previous chapter, we introduced the key elements of business growth. In this chapter, we explore each element in greater detail, beginning with Business Growth Anatomy.

COMPARISON SCHEDULE: ORGANIC VS. INORGANIC GROWTH

Comparison Aspect	Organic Growth	Inorganic Growth
Speed	Slow and gradual	Fast and significant leaps
Need for Funds	Lower (uses internal funding)	Higher (requires external borrowing and investment)
Financial Risk	Low	High (increased debt burden and integration risks)
Complexity	Low	Very high (differences in culture, systems, HR, and operations)
Sustainability	Higher	Dependent on successful integration
Margin Impact	Stable or improved	Potential decline due to merging with lower-margin businesses
Financial Report Impact	Stable income and profit	Sharp increases in income, debt, and goodwill

CASE STUDY: CP ALL MERGER WITH MAKRO — A HISTORIC LESSON

- The Debt-to-Equity ratio (D/E Ratio) rose sharply from 1.65 to 9.43 within one year.
- Overall profit margin declined after combining high-margin convenience stores with lower-margin wholesale operations.
- A significant amount of goodwill appeared on the financial statements, creating long-term impairment risk.

In the next chapter, we will explore the remaining two elements of business growth in greater detail.

Siriyothin Accounting & Law Firm

152/1 Moo 12 Soi Jomtien 1

Jomtien Beach Road Pattaya

Tel. 080-4432899

Email: sampattaya2020@gmail.com



MEDIUM

	5					7	
			2		5	6	
	9	2	4				
							7
	3			8		9	
	8	6			3		4
		7	2			6	
			6		1		
1				4			

5		7					
						2	9
3	4			1		5	
					7		
2		6					5
		8	3		9		1
	8			9			
						6	
1			2			7	

	1						
	6		4			1	8
		9					6
			8		5		9
2	4					3	
						5	
8					7		
7							6
	5			6			2

							9
7	2	3					
	5						
	9	1	4				
				1	6		3
			7		8		6
		2		5		3	
	3	7		2			
9				6		8	

HARD

				2			
	7			8		5	3
	2	4			6		
7						8	
1	4		7			3	
		2	5				9
		9			1		4
						7	
				4			8

		7			9	8	
				1	8	2	4
1	7		5				4
3				6		1	
				4	2		9
4							
	3	2					5
	8				1	4	

							5
3	4			2		6	7
				1		2	
8	9		2				
			5			7	
			9	4			8
	1						
		4					5
		5		8	6		4

	8						
			9	4			
			1				2
2		6					4
		8		6	7		5
	3						1
				7		5	
	7					9	6
		2			5		3

Rotary Club Eastern Seaboard Tom Jones & Neil Diamond Tribute

Tom Canning is one of the UK's top Tom Jones Tribute acts
Also, the Stars in Their Eyes winner in 1990 with his Neil Diamond act



Friday 27th February 2026
5.30 for 6.00 pm
Siam Bayshore Parkview Ballroom



The evening is President Jeff Mitchell (MBE) 65th Birthday Charity Event
Music & Dancing Sumptuous Buffet. Red & White Wine, Beer
& Soft Drinks will be served throughout the evening.



Ticket 2,000 THB pp
Booking is only confirmed with payment
Tickets will not be available at the door.

For Bookings, please contact

Rodney James Charman
Email: rodney1692@gmail.com

Dress Code: Smart



IMPORTANT TELEPHONE NUMBERS

The Pattaya City Center 1337 then 9 for English



Emergency Hotline: 191
Pattaya Police Station: Soi 9
038 420 - 802
Tourist Police 1155



Fire & Rescue 199
Pattaya Fire Station
038 425 943



General Emergency 191 or 911
Bangkok Pattaya 038 259 999
Pattaya international 038 428 374
Pattaya Memorial 038 488 777



Electricity Pattaya
038 426 463
Water 1416 Press 9
For English
Garbage Collection
038 428 100



Airport Flight Information
Suvarnabhumi (02) 132 1888
U-Tapao Airport 038 245 593



Traffic accidents
medical assistance 1669
Highway Police 1193

SOLUTIONS

MEDIUM

3	5	8	1	6	9	4	7	2
4	7	1	3	2	8	5	6	9
6	9	2	4	5	7	1	3	8
2	1	9	5	4	6	3	8	7
5	3	4	7	8	2	9	1	6
7	8	6	9	1	3	2	4	5
8	4	7	2	3	5	6	9	1
9	2	3	6	7	1	8	5	4
1	6	5	8	9	4	7	2	3

5	2	7	9	3	8	1	6	4
8	6	1	4	7	5	2	9	3
3	4	9	6	1	2	5	7	8
9	1	4	5	2	7	8	3	6
2	3	6	8	4	1	9	5	7
7	5	8	3	6	9	4	1	2
6	8	5	7	9	4	3	2	1
4	7	2	1	5	3	6	8	9
1	9	3	2	8	6	7	4	5

5	1	2	6	8	3	7	9	4
3	6	7	4	9	2	1	8	5
4	8	9	5	7	1	2	3	6
1	7	3	8	2	5	6	4	9
2	4	5	7	6	9	3	1	8
6	9	8	1	3	4	5	2	7
8	2	6	9	1	7	4	5	3
7	3	4	2	5	8	9	6	1
9	5	1	3	4	6	8	7	2

1	8	6	2	7	3	5	9	4
7	2	3	9	4	5	6	8	1
4	5	9	6	8	1	2	3	7
6	9	1	4	3	2	7	5	8
2	7	8	5	1	6	9	4	3
3	4	5	7	9	8	1	6	2
8	6	2	1	5	4	3	7	9
5	3	7	8	2	9	4	1	6
9	1	4	3	6	7	8	2	5

HARD

9	5	3	1	2	7	4	6	8
6	7	1	4	8	9	5	3	2
8	2	4	3	5	6	9	1	7
7	9	5	6	1	3	8	2	4
1	4	8	7	9	2	3	5	6
3	6	2	5	4	8	1	7	9
2	3	9	8	7	1	6	4	5
4	8	6	2	3	5	7	9	1
5	1	7	9	6	4	2	8	3

2	4	7	3	5	9	8	6	1
9	5	6	7	1	8	2	3	4
8	1	3	4	2	6	5	7	9
1	7	9	5	8	3	6	4	2
3	2	4	9	6	7	1	5	8
5	6	8	1	4	2	3	9	7
4	9	1	2	3	5	7	8	6
6	3	2	8	7	4	9	1	5
7	8	5	6	9	1	4	2	3

1	2	8	6	7	9	4	5	3
3	4	9	8	2	5	6	7	1
7	5	6	3	1	4	2	8	9
8	9	7	2	3	1	5	4	6
4	3	1	5	6	8	7	9	2
5	6	2	9	4	7	3	1	8
9	1	3	4	5	2	8	6	7
6	8	4	7	9	3	1	2	5
2	7	5	1	8	6	9	3	4

9	8	1	7	2	3	6	5	4
6	2	5	9	4	8	1	7	3
3	4	7	1	5	6	8	2	9
2	1	6	3	8	9	7	4	5
4	5	8	2	6	7	3	9	1
7	3	9	5	1	4	2	6	8
8	9	3	4	7	2	5	1	6
5	7	4	6	3	1	9	8	2
1	6	2	8	9	5	4	3	7

Getting their kicks on Route 66

By Carla Marie Rupp and Jason Rupp

Kansas sits in the centre of the United States and is well known for its sunsets, and vast agricultural fields. It became North America's 34th state in 1861 and this year Kansas takes part in celebrating America's 250th birthday. Its capital is Topeka and Wichita stands as its largest city. However, Carla and Jason Rupp's travels through Kansas reveal a state far richer and more diverse than many travelers would expect, full of charming towns, unexpected landscapes, and historic treasures.

Route 66, often called the Mother Road, stretches from Chicago to Santa Monica, connecting small towns, big cities, and diverse landscapes across eight states. The Kansas stretch of Route 66, though short, is packed with Mother Road charm. The "gateway" visitor center sits in a historic gas station that now serves as the first stop for travelers entering the state. Small towns hold delightful surprises. Chanute houses the Martin & Osa Johnson Safari Museum, featuring photographs and stories from Kansas explorers who documented African wildlife, and Frontenac preserves immigrant mining heritage at the Heritage Hall Museum.



Baxter Springs welcomes visitors with a large historical mural and a helpful visitor center and in Galena, travelers photograph Luigi's Pit Stop and visit Cars on the Route, a restored Kan-O-Tex service station featuring vehicles that inspired characters from the Cars movie. Antique cars abound along this stretch of Route 66. From these urban centers to rural crossroads, Kansas invites travelers to explore its roads, museums, parks, main streets, and communities.

Known as "The Wheat State," agriculture is deeply woven into the identity of Kansas. The state exports wheat worldwide and grain elevators stand like sentinels in nearly every town. Jason's grandfather was a wheat farmer north of Wichita, and the Rups still return to Kansas often, filming barbershop videos for the Jason Rupp YouTube channel in places like Moundridge, McPherson, Newton, Hutchinson, and Wichita. Jason's favorite "nostalgic" barber experience was at Tom's Barbershop in Newton, where his grandfather once took him as a child.

Kansas played a key role in the Civil War era and is rich in Native American heritage too which is celebrated at museums and historical centers across the state. In Wichita, travelers can enjoy Exploration Place, the Wichita Art Museum, Botanica gardens, Cowtown, and the Sedgwick County Zoo. Wichita is an excellent starting point for a road trip, offering diverse restaurants, live music, breweries, theaters, and a convenient airport.

Kansas also protects wildlife like the iconic bison. with bison preserves such as the Maxwell Game Preserve near Canton and the Sandsage Bison Range & Wildlife Area near Garden City. Seeing these magnificent animals roaming the prairie recalls earlier eras in Kansas history.

Across Kansas there are scenic dirt roads from which to enjoy vast ever-changing skies. Along paved roads visitors can find friendly small-town diners, art spaces, and music venues. Wichita offers live bluegrass music at Central Standard Brewing on Tuesdays, the Shamrock bar features rock and blues, the Cowboy Inn has country music and Moundridge's Hub hosts weekend bands with handmade pizza.



There are also powerful, modern stories in cities like Greensburg which after a devastating tornado, was rebuilt with resilience and innovation. Its museum recounts the dramatic event through photos, and visitors can descend a winding stairway to view the historic Big Well, and learn how and why it was constructed

Route 66 symbolizes freedom, road trips, and the promise of the American West. Families, migrants, and adventurers traveled its length seeking opportunity and adventure and Route 66 lives on through preserved sections, classic diners, neon signs, and roadside attractions that celebrate the enduring spirit of travel. Today it inspires artists, musicians, writers, historians and photographers worldwide, and Kansas is proud to be a part of this.

The state of Kansas welcomes travelers with open arms, affordable prices, and endless opportunities for adventure. Whether exploring the Mother Road, local main streets, byways, or frontier trails, visitors discover that Kansas is a state full of stories waiting to be experienced, and prices are less than in the more populated USA states. Visit Travel Kansas at www.travelks.com for unique destinations or contact us for more tips.

Jason Rupp and Carla Marie Rupp are freelance travel journalists, with the emails of jasonruppy@gmail.com and carlaruppy@gmail.com.

Route 66 photos by Jason Rupp



FORTNUM & MASON EST. 1707

HAS A NEW TREASURE

BY GLORIA JONES

Shopping for some of us is a fun event for others a necessary evil. Many people find that retail therapy is alive and well whilst others go for the convenience of online shopping. The latter has definitely had a detrimental effect on the retail industry throughout the world with many high street names having to close their doors. However, there are places in the world that go beyond the stamp of being described merely as “department stores”. Gallerie la Fayette in Paris and Bergdorf Goodman in New York for example are iconic masterpieces of architecture and taste and for me the best “store” in the world is London’s Fortnum & Mason.

To visit Fortnum’s is not just a treat for a serious shopper it is also a visit into a bygone era where liveried assistants glide around carpeted floors ready and willing to serve you. I love absolutely everything about this wonderful store starting from the outside with their amazing window displays. Always worthy of a look as you stroll along Piccadilly they are rarely commercial. Mostly they often don’t even feature product for sale, preferring to attract passers by with images that are whimsical and artistic. Then as you step inside the sweets, chocolates, teas, biscuits and coffees are displayed so beautifully you feel as though you are in a Harry Potter film set. Don’t even get me started on the iconic hampers and dazzling tea rooms and restaurants!

So on my recent trip to London it was really a must to visit Fortnum and Mason and see their newest architectural marvel: The Double Helix Staircase that was recently unveiled by none other than His Majesty King Charles. A two-year project, the staircase was built in sections by a team of talented craftspeople in West Sussex and then carefully assembled inside the store. The staircase features more than 3,000 hand-forged details each hand-cast by a master blacksmith and has been created in collaboration with celebrated architectural designer Ben Pentreath.



Why is it so special? Well aside from looking beautiful it has been inspired by Leonardo da Vinci's vision of a Double Helix Staircase. Only 5 exist of these two entwined staircases exist in the world. At Fortnum's their staircase takes centre stage right in the middle of the ground floor allowing customers to go down to the Lower Ground and then right up to every floor above. Wrapping around the centre of the building's atrium this amazing staircase looks like twisting strands of DNA and while I was there mesmerized many visitors who like myself enjoyed looking right up through its twists and turns.

If you are in London please find an excuse to visit Fortnum and Masons and see the commemorative plaque by this very special staircase.



TRAVEL TRENDS FOR 2026



Personalization & AI-Driven Travel Planning

Travellers are increasingly using intelligent tools and the rise of AI-powered travel planning will be one of the hallmark trends for 2026. Not just to search for flights and hotels, but also to design entire itineraries and schedules. AI systems can now integrate flight, accommodation, and activity options into seamless suggestions, predict optimal booking times, anticipate disruptions, and offer real-time adjustments.

Younger generations especially Gen Z and Millennials are leading the shift, to using digital tools and social platforms for inspiration and planning. Digital discovery is rapidly becoming the default travel workflow. As personalization becomes the norm, travel experiences will feel less generic and more tailored, meaning recommendations and journeys will increasingly match individual tastes, budgets, and values.

Rise of Lesser-Known Destinations

Travellers are also moving away from traditional hotspots toward off-radar and emerging locales. For example Albania's Riviera, Sri Lanka's east coast, the historic town of Cascais in Portugal and Namibia's deserts are gaining search and booking interest. Also smaller cities like New Haven, Connecticut have surged in popularity due to cultural factors and niche appeal. These destinations offer lower crowds, and help to spread economic benefits more widely and reduce overtourism pressure on major hubs such as Japan, Paris and Rome - which will all continue to be popular as well.



Authentic & Immersive Experiences

According to industry experts, authentic, culture-rich travel is rising. Visitors prefer off-the-beaten-path locations and immersive cultural interactions, and experiences. Community-centered tourism where travellers can join workshops with local artisans, stay in community-owned properties, and contribute financially to local economies is gaining in popularity. Also something termed Slow travel has become a thing. This is where you can stay longer in one place to live the destination, savour the foods, traditions, and landscapes at a slower pace. A shift from fleeting sightseeing Slow travel will make for more lasting memories and cross-cultural understanding.



Sustainability

Sustainable travel certainly isn't a new trend, but in 2026 it will become far more central to many trip decisions. Travellers will demand high-end experiences that benefit the environment, allow them to explore the world responsibly, and protect destinations for future generations. Expect to see an increase in carbon-neutral retreats, regenerative tourism lodges, and zero-waste programs. Also, nature and conservation adventures where participants help with wildlife monitoring, forest regeneration and marine research. Travel products will need to be designed sustainably such as souvenirs that are locally sourced and support regional artisans to reduce transport emissions.

Wellness Travel

Wellness travel continues to grow beyond spas and gym sessions; it's now about holistic well-being. So in 2026 it will include digital detox retreats, meditation and breathwork camps, forest bathing and nature immersion. Also, sleep tourism, where itineraries are designed to improve rest and circadian rhythms. These trips aren't just vacations; they're investments in health, resilience, and mindful living. As burnout and stress increase globally, the kind of travel that restores well being will become a priority helping people return home healthier than when they left.

Niche and Fan Based Travel

2026 is already seeing a rise in the booking of highly specialized travel holidays based around sporting events, interests or hobbies. Travel destinations may be inspired by books, or movies and TV shows where fans can visit real filming locations. Alpine regions are also now attracting year-round visitors rather than just a time for winter sports. Visitors to these areas seek serenity, fresh air, and outdoor activities. These trends show how travellers are increasingly planning their trips around passions and identities, not just destinations.



All in all 2026 will see travel become more personal, purposeful, and tech-enabled than ever before. With travellers not just exploring new places but creating meaningful breaks shaped by sustainability, wellness and local immersion. From AI-driven planning to slow, mindful exploration and niche passions like literary or sports travel, the future promises experiences that are as diverse as the travellers themselves. Whether you're chasing serenity in the mountains, tracking film locations, or designing a wellness retreat, the trends emerging in 2026 reflect travel that enriches, connects, and transforms.

Tourism Authority of Thailand outlines strategic direction for 2026

This year's strategy is covered by the theme Thailand Tourism Next

The Tourism Authority of Thailand (TAT) outlined the strategic direction for 2026 under the banner Thailand Tourism Next yesterday, 12th January.



The new outline sets a clear course towards higher-quality, value-led tourism with a target of generating up to three trillion Baht in total tourism revenue.

According to TAT governor Thapanee Kiatphaibool: "Thailand Tourism Next marks a clear shift from recovery to transformation. In 2026, the focus is on elevating quality, restoring balance and creating long-term value for the economy, society and the environment. The three trillion-Baht target reflects confidence in Thailand's potential and a commitment to growth that is sustainable, inclusive and resilient for the future."

A performance-based plan

The strategy builds on Thailand's resilient tourism performance in 2025, when the sector continued to support national economic recovery despite global uncertainty. International arrivals reached 32.97 million, driven by a record 10.8 million visitors from long-haul markets.

At the core of the 2026 agenda is the Amazing 5 Economy framework, which redefines tourism growth through a Value over Volume approach.

The Life Economy strengthens Thailand's position in wellness and medical tourism, while the Sub-Culture Economy targets high-potential niche segments including film, sports, yacht and cruise tourism, private aviation and creative communities.

Night Economy initiatives aim to extend length of stay and distribute activity beyond daytime hours, while Circular Economy principles embed sustainability and regional income distribution. Platform Economy development focuses on seamless digital travel, e-commerce and cashless solutions to enhance the visitor experience. These pillars are reinforced by five focused marketing strategies designed to drive quality tourism and sustainable returns.

The approach prioritises confidence in the Amazing Thailand brand through world-class safety, hygiene and service standards, positions Thailand as a premium destination, and strengthens competitiveness via Airline Focus Partnerships.

This is supported by in-market and fragmented communications to keep Thailand top of mind, alongside active demand management to balance domestic and international markets and disperse travel across regions and seasons.

Communication matters

With regard to international marketing, TAT is advancing its overarching thematic Healing is the New Luxury, positioning Thailand as a year-round destination for restoration, emotional wellbeing and culturally grounded experiences.

In the domestic market, Suk Thun Tee, Tee Tiew Thai continues to stimulate high-value travel while reinforcing pride in Thai destinations.

These narratives are complemented by ongoing efforts to elevate Thailand's profile as a world-class filming destination under Amazing Film Location Thailand, and are amplified through collaboration with global media, digital platforms and leading business partners.

Global market foci

For international markets, TAT will prioritise long-haul travellers through the NIYOM strategy, reinforcing Thailand's appeal through New experience-led journeys, Inclusive hospitality standards, readiness as a Year-round destination, strong cultural Originality and a focus on Meaningful travel.

Short-haul markets will be addressed through deeper market-specific engagement, expanded niche and high-value segments, and the introduction of new travel themes and destinations to support balanced tourism growth.

This international market approach is underpinned by the evolution of the TAT into an Intelligence Hub, advancing a Digital Tourism Ecosystem that connects demand and supply.

On the demand side, this includes enhanced access to high-quality travellers through the Amazing Thailand SuperApp and AI-driven traveller matching.

On the supply side, a national Stakeholder Portal enables tourism operators nationwide to present products and services more effectively, strengthening a resilient and sustainable tourism ecosystem over the long term.

WE HAVE LAND FOR SALE

**Ref 1) 15 Rai on Kho Larn Island Ideal for Casino
or Resort 25 Million Thb per Rai**

**Ref 2) 17 Rai (2 Chanots) Opposite Jungle Moon,
Sattahip 4.5 Million Thb per Rai**

**Ref 3) 56 Rai Close to Nong Nooch Gardens
6.5 Million Thb per Rai**

**Ref 4) 32 Rai 2 Twa Close to the Cartoon Network
35 Million Thb**

**Ref 6) 32 Rai Close to Sukhumvit Road
Pattaya 35 Million Thb**

**Ref 7) 9 Rai With House Close to Ramayana Water
Park 16 Million Thb**

**Ref 10) 194 Rai Adjacent to Sunplay Bang Saray
4.5 Million Thb per Rai**

**Ref 11) 36 Rai by Mabprachan Lake
5 Million Thb**



Contact Us

094 757 9328

falcoreross@gmail.com





Live & Work in Thailand – Run Your Own Restaurant or Catering Business in Pattaya

Looking for a legitimate way to live and work in Thailand? Here's your chance to take over a successful restaurant business and secure a work permit at the same time.

If you're under 55, a work permit is your best option to stay long-term in Thailand. This business gives you exactly that — plus the chance to grow your own successful venture in the Land of Smiles. With the help of the previous owners who have the experience to get you setup.



- Rent: 25,000 THB/month
- One-year lease paid in advance (300,000 THB)
- Security deposit: 200,000 THB (refundable)
- Full legal setup assistance (company, visa, Work Permit)
- Support during transition
- Fully operational, turnkey setup
- International & Thai cuisine



Contact Us

094 757 9328

falcoreross@gmail.com





HAVE YOU EVER WANTED TO RUN YOUR OWN BEACHSIDE HOTEL?



- Hotel License already secured
- Property is Currently under Renovation
- 54 Bedrooms
- 3rd Floor Pool (6 X 12m)
- Space for Beachfront Restaurant (18 X 80m)
- Total Land: 1-1-07 rai + 90 sq. wah
- Parking: 15 Covered + Outdoor spaces
- Ideal for a young dynamic Entrepreneur or existing Hotel Chain



Contact Us

094 757 9328

falcoreross@gmail.com





Meet the Team at CASA PATTAYA – A Professional Real Estate Agency

Based in Pattaya Casa Pattaya specializes in buying, selling, and renting condos, pool villas, and investment properties. With years of experience and deep local market knowledge they can give you honest advice, personalized service, and full support. From property search to transfer. Serving both Thai and international clients with multilingual support.

TRUSTED REAL ESTATE EXPERTS

VISIT CASA PATTAYA WEBSITE



Visit Casa Pattaya Website

#

@CASAPATTAYA

view properties now

Casa Pattaya Real Estate Team

Your Trusted Partner in Property Solutions

@CASAPATTAYA

Explore Casa Pattaya

#



New Projects in Pattaya Presented by Casa Pattaya Real Estate



ZENITH II

PATTAYA

A next-generation wellness residence in a prime Pattaya location.

Start From
3.29 MILLION BAHT

SEVEN SEAS Le Carnival

Elegant and affordable luxury living in a fully furnished beachside condominium by Universal Group Thailand.

Start From
2.4 MILLION BAHT



2026



Grand Solaire Noble is a 50-storey luxury condo in central Pattaya, offering panoramic views and easy access to the beach and city life.

Start From
4.2 MILLION BAHT



Address : 210/1 Soi Siam Country Club,
Nongprue, Banglamug, Chonburi 20150

Contact us

For more information contact us

CASA PATTAYA
REAL ESTATE



Make an appointment or visit us today to discover your perfect property in Pattaya



096-771-7777



Casa Pattaya Property Group



casapattaya



+66-96-771-7777



@casapattaya



casapattaya1



Casa Pattaya Real Estate



sales@casapattaya.com



casapattaya.com

Avenue Boutique

Condominium

701



Complete in 2029

High Yields Market

Installment available



Avenue Boutique Condominium is a brand-new 8 floor low-rise condominium 2 Buildings of **276 unit** in total. Development perfectly positioned **Central Soi Buakhao 15**, right in the vibrant heart of Pattaya. Residents enjoy access to a wide range of premium facilities that transform everyday living into a boutique experience.

Ground-Level Swimming Pool a refreshing oasis surrounded by landscaped gardens. Fully Equipped **Fitness Center** modern gym for cardio, strength, and wellness. Sauna & Steam Rooms dedicated spaces for relaxation, detox, and health benefits. **Rooftop Garden** beautifully landscaped sky retreat with panoramic city views **24-Hour Security & CCTV** complete peace of mind with round-the-clock protection **Secure Parking** convenient on-site parking spaces for residents On-Site Property Office professional management and support right at home.

20 YEARS EXPERIENCE

Avenue Boutique - A Smart Investment Opportunity for both **city living style and investment**. Construction and Development of Avenue Boutique is well known by **Mr. Maimon David Marsiano**, a trusted developer with over 20 years of experience and a successful track record in Pattaya, including Grand Avenue Residence, City Garden, Cosy Beach View Condo, and Centara. With its prime location, high demand for rentals, and strong capital appreciation potential, Avenue Boutique is ideal for both long-term investors and those seeking a vacation home in Pattaya,

PRIME LOCATION SOI BUAKHAO 15, CENTRAL

Avenue Boutique Condominium offering a smart and efficient living space perfect for singles or the perfect balance of space and style for couples and professionals. The 2 bedroom generous space ideal for families. There is city view and swimming pool for your selective.

The Studio units start from 3.1M, for 25.65 sqm. 1-bedroom units range from 3.8M, 34.55 56.90 sqm. and The 2-bedroom units range from 7.1 M, 55.15-84.50 sqm.



Avenue Boutique Condominium combine modern functionality with elegant style to create a home that feels both practical and inspiring. Each residence is delivered fully fitted with a built-in kitchen, wardrobes, sanitary areas, and high-quality appliances, allowing for immediate comfort while leaving room for personal touches.



YouTube LINE @ TIKTOK
www.avenueboutiqueofficial.com
sale@avenueboutiqueofficial.com

081 940 5712, 092 712 9949

More than a school - A family, a community, a legacy



Why Parents Choose Green Valley



**Top
Exam
Results
results
in Thailand**

100%

university
placements
worldwide



**Personalised,
boutique learning
environment**



**Vibrant
community**
of students,
parents &
teachers

**Expansive
green
campus**

with a focus
on eco-
literacy



St. Andrews
International School
Green Valley
Celebrating 30 years



092-258-1332 (For Thai Enquiries)

081-328-6679 (For English Enquiries)



LINE: @standrewsgv

Be adventurous. Be brilliant. Be happy.